



Eugene Simpson Stadium Park Renovation

Park and Recreation Commission Update

April 21, 2022

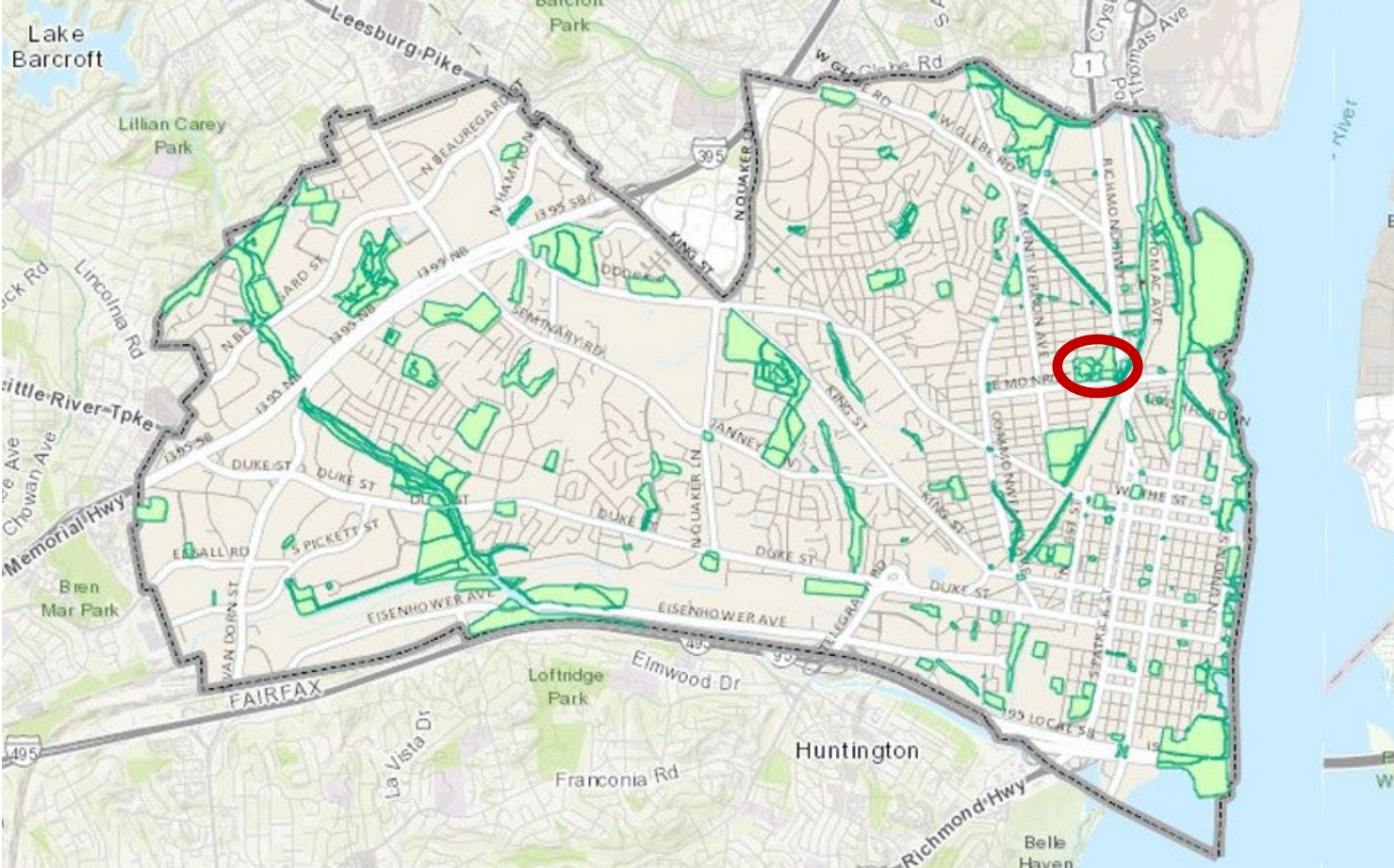


Agenda

- Existing Conditions
- Project Goals
- Schematic Design Overview
- Community Process and Stakeholders Outline

- Commission Action Requested:
 - Receive the Update
 - Provide Feedback and Input on the Community Process Elements

Project Location





SIMPSON PARK: EXISTING CONDITIONS

- HARD TRAILS
- BIKE ROUTE
- ATHLETIC FIELDS
- PARK BOUNDS



- ### KEYED LEGEND
1. WIDEN PATH 6-8 FEET TO ENABLE NORTH-SOUTH STANDARD PATHWAY
 2. ADJUST PLAYGROUND BORDERS, IMPROVE ENTRANCES, AND ADD NATURAL PLAY
 3. ADD STROLLER PARKING AND PLAZA AT PLAYGROUND ENTRANCE
 4. CREATE OPEN-USE AREA AND IMPROVE PLANTINGS IN PASSIVE USE AREAS
 5. CONNECT PATHWAY TO E. DUNCAN AVE
 6. USE BOLLARDS TO LIMIT PATHWAY DRIVING ACCESS TO MAINTENANCE VEHICLES
 7. PLANT PERIMETER TREES TO CREATE "GREEN ALLEY"
 8. PROVIDE NEW HARD TRAILS IN EAST HALF OF PARK
 9. PROVIDE NEW FIELD ENTRANCE AND RAMP
 10. IMPROVE MAINTENANCE ROUTE TO SOCCER FIELDS
 11. PROVIDE NEW BLEACHERS WITH EQUIPMENT STORAGE UNDERNEATH
 12. PROVIDE NEW BLEACHERS WITH CONCESSIONS BOOTHS UNDERNEATH
 13. CREATE PICNIC AREA NEAR CONCESSIONS
 14. EXPAND PARKING LOT
 15. ENCOURAGE USE OF FORTY FIVE TOTAL ON-STREET PARKING SPACES ALONG E MONROE AVE AND MAIN LINE BLVD FOR SOCCER FIELD USE
 16. IMPROVE DOG PARK TO INCLUDE LIGHTING, TERRACED HILL, TREES, AND PLAY FEATURES
 17. ADD MAINTENANCE STORAGE SHELTER AND YARD BETWEEN FIELDS
 18. ADD VEGETATED BIOSWALE ALONG DOG PARK EDGE AND AT MAINTENANCE YARD



2014 Citywide Parks Improvements Plan

GRAPHIC KEY

| | | | | | |
|-------------|-------------|----------------|-----------------|-----------------|----------|
| HARD TRAILS | PARK BOUNDS | OPEN USE AREAS | ENTRANCE PLAZAS | ATHLETIC FIELDS | DOG PARK |
| BIKE ROUTE | | | | | |

Project Milestones To Date

2021

- July Design funding approved
- November 2014 Citywide Park Plan amendment for synthetic turf option
- December Design contract awarded to Gordon

2022

- January Institute for Sustainable Infrastructure's Envision process kick-off
- February City Draft Budget Proposal (construction funding)
- February Initial survey and data collection complete
- March User group surveys and schematic concept development
- April Schematic concept presentations

Schematic Rendering



7. PLANT PERIMETER TREES TO CREATE "GREEN ALLEY"
8. PROVIDE NEW HARD TRAILS IN EAST HALF OF PARK
9. PROVIDE NEW FIELD ENTRANCE AND RAMP
10. IMPROVE MAINTENANCE ROUTE TO SOCCER FIELDS
11. PROVIDE NEW BLEACHERS WITH EQUIPMENT STORAGE UNDERNEATH
12. PROVIDE NEW BLEACHERS WITH CONCESSIONS BOOTHS UNDERNEATH
13. CREATE PICNIC AREA NEAR CONCESSIONS
14. EXPAND PARKING LOT

Schematic Rendering



7

8

- 7. PLANT PERIMETER TREES TO CREATE "GREEN ALLEY"
- 8. PROVIDE NEW HARD TRAILS IN EAST HALF OF PARK
- 9. PROVIDE NEW FIELD ENTRANCE AND RAMP
- 10. IMPROVE MAINTENANCE ROUTE TO SOCCER FIELDS
- 11. PROVIDE NEW BLEACHERS WITH EQUIPMENT STORAGE UNDERNEATH
- 12. PROVIDE NEW BLEACHERS WITH CONCESSIONS BOOTHS UNDERNEATH
- 13. CREATE PICNIC AREA NEAR CONCESSIONS
- 14. EXPAND PARKING LOT

Community Engagement Process

- Engage community groups early in the process and throughout the design development
 - Focus Groups
 - Survey Requests
- Provide information and access to the design process in the park and online
 - Message Boards and Graffiti Boards
 - Webpage
- Utilize boards and commissions to leverage their expertise and existing community networks
- Park Stakeholder Groups
 - Adjacent Neighborhood
 - Kettle Park Community Partners
 - Master Gardeners
 - Sports User Groups
 - Alexandria City High School
 - Simpson Park Dog Owners Group
 - Boards and Commissions
 - City Staff

Commission Feedback

Schematic Rendering



- 7. PLANT PERIMETER TREES TO CREATE "GREEN ALLEY"
- 8. PROVIDE NEW HARD TRAILS IN EAST HALF OF PARK
- 9. PROVIDE NEW FIELD ENTRANCE AND RAMP IMPROVE MAINTENANCE ROUTE TO SOCCER FIELDS
- 11. PROVIDE NEW BLEACHERS WITH EQUIPMENT STORAGE UNDERNEATH
- 12. PROVIDE NEW BLEACHERS WITH CONCESSIONS BOOTHS UNDERNEATH
- 13. CREATE PICNIC AREA NEAR CONCESSIONS
- 14. EXPAND PARKING LOT

Schematic Rendering



- 7. PLANT PERIMETER TREES TO CREATE "GREEN ALLEY"
- 8. PROVIDE NEW HARD TRAILS IN EAST HALF OF PARK
- 9. PROVIDE NEW FIELD ENTRANCE AND RAMP
- 10. IMPROVE MAINTENANCE ROUTE TO SOCCER FIELDS
- 11. PROVIDE NEW BLEACHERS WITH EQUIPMENT STORAGE UNDERNEATH
- 12. PROVIDE NEW BLEACHERS WITH CONCESSIONS BOOTHS UNDERNEATH
- 13. CREATE PICNIC AREA NEAR CONCESSIONS
- 14. EXPAND PARKING LOT



Next Steps

Spring/Summer 2022:

- Concept Design
- City and ACPS Interdepartmental Coordination
- Community Engagement

Additional information:

Mitch Dillon, Project Manager

Mitch.Dillon@alexandriava.gov

Bethany Znidersic, Acting Division Chief

Bethany.Znidersic@alexandriava.gov